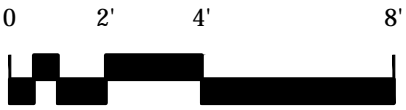






- NOTES:**
1. GC TO COORDINATE WITH CHURCH'S SEPARATELY CONTRACTED STAINED GLASS COMPANY, SERPENTINO STAINED GLASS. WORK TO INCLUDE REMOVAL OF EXISTING PLEXIGLASS EXTERIOR GLAZING, FRAMES AND SEALANTS, CLEANING OF GLASS INTERIOR AND EXTERIOR, AND WEATHER PROOFING WITH NEW GLAZING COMPOUND.
  2. GC TO COORDINATE WITH CHURCH'S SEPARATELY CONTRACTED AUDIO-VISUAL COMPANY, SHANAHAN SOUND. WORK TO INCLUDE NEW SOUND AMPLIFICATION SYSTEM, WIRING, AND CONTROLS. GC TO PROVIDE SUPPORT BLOCKING WHERE REQUIRED.
  3. GC TO CONTRACT AND COORDINATE THE WORK OF A DESIGN-BUILD PLUMBING AND HEATING SUBCONTRACTOR FOR RENOVATED SPACES. SCOPE OF WORK AND PROPOSED LOCATIONS OF PIPING AND EQUIPMENT SHOWN ON THE ARCHITECTURAL DRAWINGS REPRESENT THE DESIGN INTENT. GC SHALL COORDINATE THEIR FIELD CONFIRMATION, ENGINEERING AND REVISION AS REQUIRED FOR CODE CONFORMANCE. ARCHITECT TO REVIEW ALL SUBMITTALS AND SHOP DRAWINGS FOR APPROVAL PRIOR TO THE WORK. GC TO COORDINATE REMOVAL OF DOUBLE RADIATOR BELOW EXISTING WEST WINDOW AND REINSTALLATION ON SOUTH WALL OF CHANCEL. STEAM PIPING TO BE LOCATED IN KITCHEN BELOW, AT LOCATION APPROVED BY THE CHURCH AND THE ARCHITECT.
  4. GC TO CONTRACT AND COORDINATE THE WORK OF A DESIGN-BUILD FIRE-PROTECTION (SPRINKLER) SUBCONTRACTOR FOR RENOVATED SPACES. SCOPE OF WORK AND PROPOSED LOCATIONS OF PIPING AND DEVICES SHOWN ON THE ARCHITECTURAL DRAWINGS REPRESENT THE DESIGN INTENT. GC SHALL COORDINATE THEIR FIELD CONFIRMATION, ENGINEERING AND REVISION AS REQUIRED FOR CODE CONFORMANCE. ARCHITECT TO REVIEW ALL SUBMITTALS AND SHOP DRAWINGS FOR APPROVAL PRIOR TO THE WORK.
  5. GC TO CONTRACT AND COORDINATE THE WORK OF A DESIGN-BUILD ELECTRICAL AND FIRE ALARM SUBCONTRACTOR FOR THE RENOVATED SPACES. SCOPE OF WORK AND PROPOSED LOCATIONS OF WIRING AND DEVICES SHOWN ON THE ARCHITECTURAL DRAWINGS REPRESENT THE DESIGN INTENT. GC SHALL COORDINATE THEIR FIELD CONFIRMATION, ENGINEERING AND REVISION AS REQUIRED FOR CODE CONFORMANCE. ARCHITECT TO REVIEW ALL SUBMITTALS AND SHOP DRAWINGS FOR APPROVAL PRIOR TO THE WORK.

[illegible]

# CHAPEL FLOOR PLAN

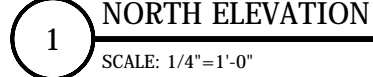
Project number	1608
Date	10-05-2018
Drawn by	DM
Checked by	DT

# A-101

Scale AS NOTED (FOR 22"X34" SHEET)



**STRUCTURAL ENGINEER**  
Boston Building Consultants  
241 A Street Suite 220  
Boston, MA 02210  
617-542-3933

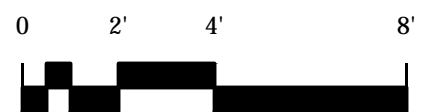
[illegible]

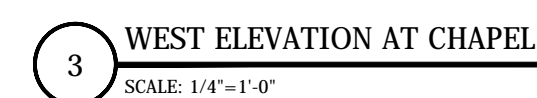
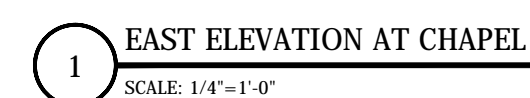
# INTERIOR ELEVATIONS

Project number	1608
Date	10-05-2018
Drawn by	DM
Checked by	DT

# A-200

Scale AS NOTED (FOR 22"X34" SHEET)



[illegible]

# INTERIOR ELEVATIONS

Project number	1608
Date	10-05-2018
Drawn by	DM
Checked by	DT

A-201

Scale	AS NOTED (FOR 22"X34" SHEET)
-------	------------------------------



**STRUCTURAL ENGINEER**  
Boston Building Consultants  
241 A Street Suite 220  
Boston, MA 02210  
617-542-3933



**NOTES:**  
1. NEW CAST STONE TRIM AT  
NEW WINDOW TO MATCH EXISTING  
2. NEW CAST STONE TO BE  
PROVIDED BY NORTHERN DESIGN  
ARCHITECTURAL PRECAST & CAST  
STONE OF LOUDON, NH



**STRUCTURAL ENGINEER**  
Boston Building Consultants  
241 A Street Suite 220  
Boston, MA 02210  
617-542-3933

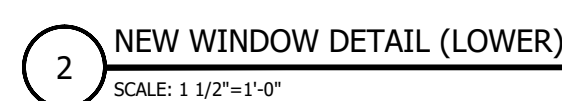
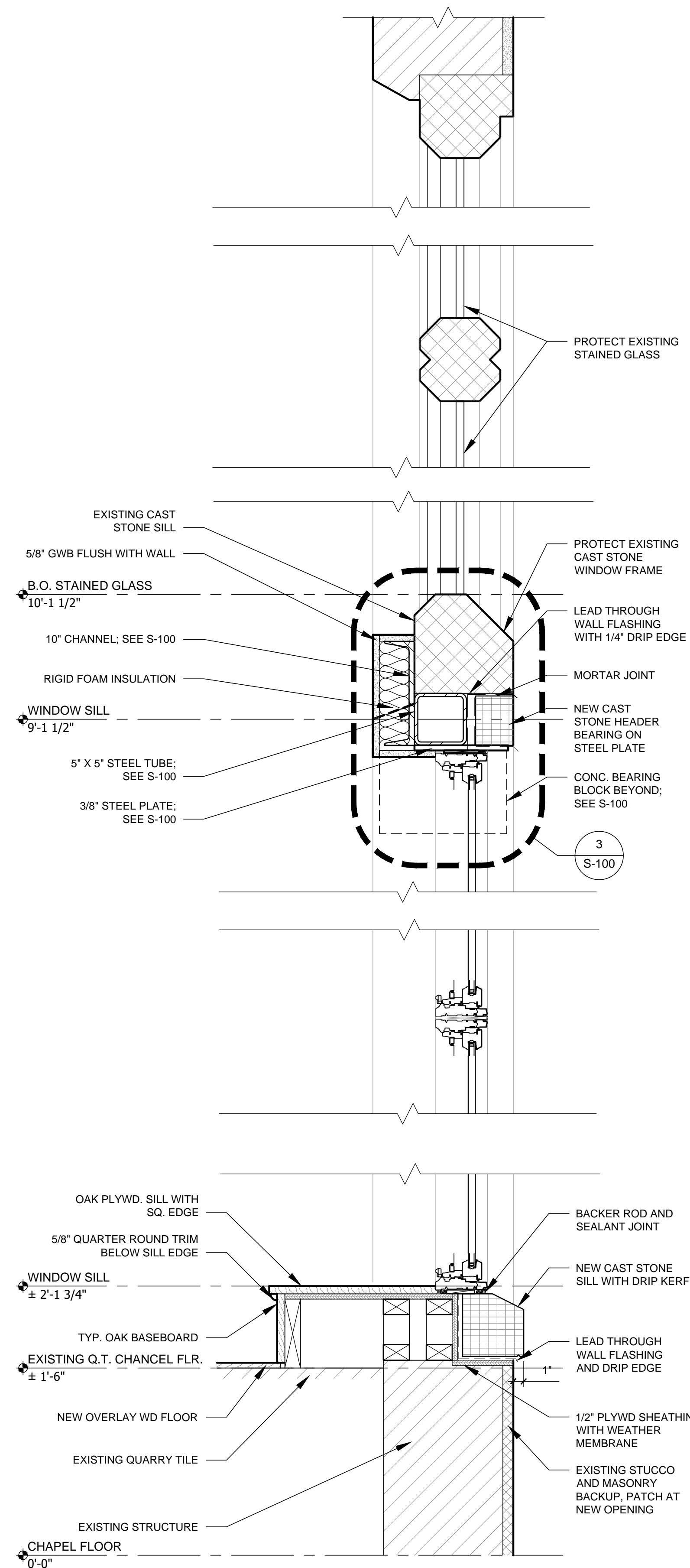
[illegible]

## END WINDOW ELEVATIONS

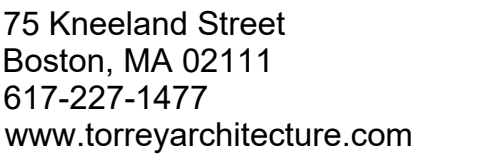
Project number	1608
Date	10-05-2018
Drawn by	DM
Checked by	DT

# A-500

Scale AS NOTED (FOR 22"X34" SHEET)



Project number	1608
Date	10-05-2018
Drawn by	DM
Checked by	DT
<h1>A-501</h1>	
Scale	AS NOTED (FOR 22"x34" SHEET)



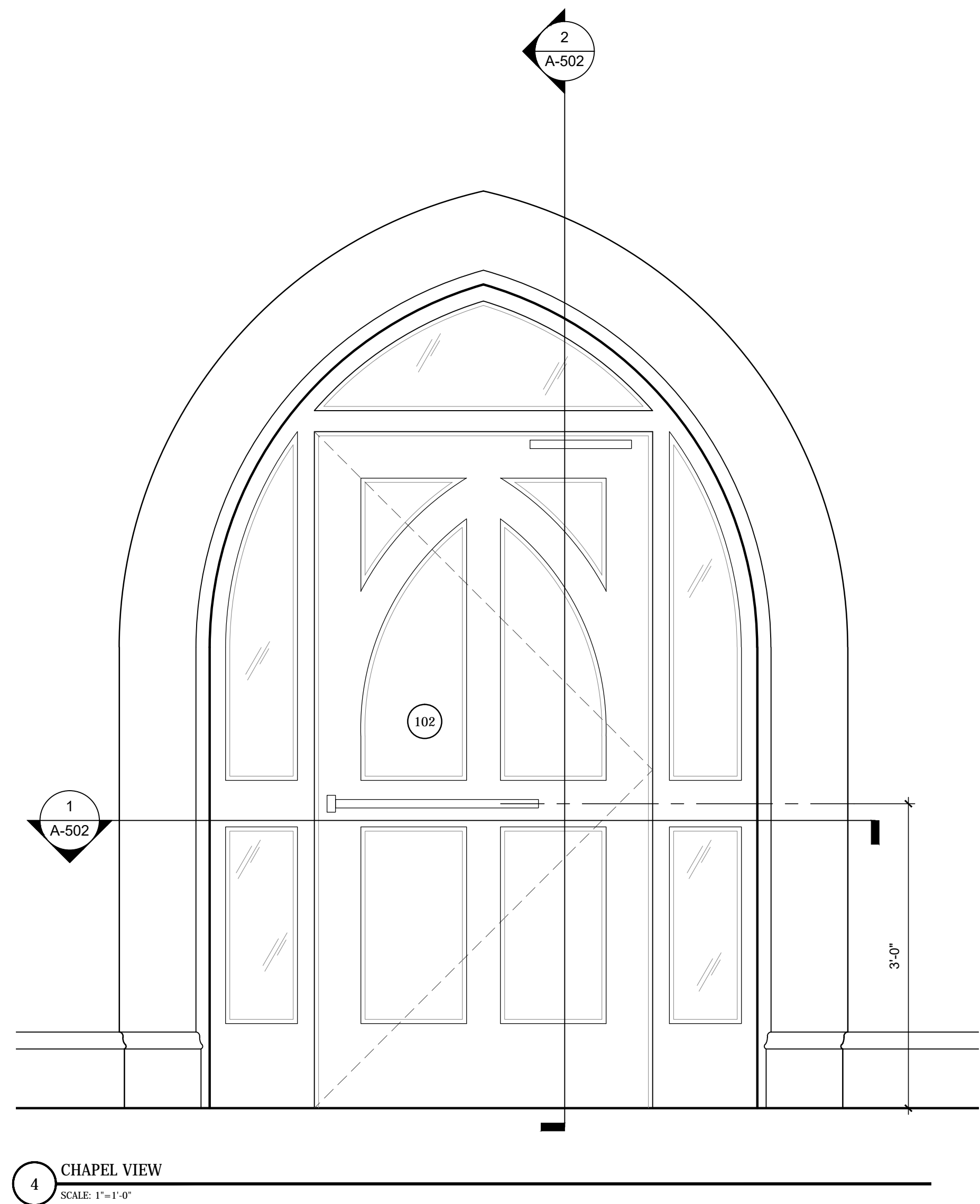
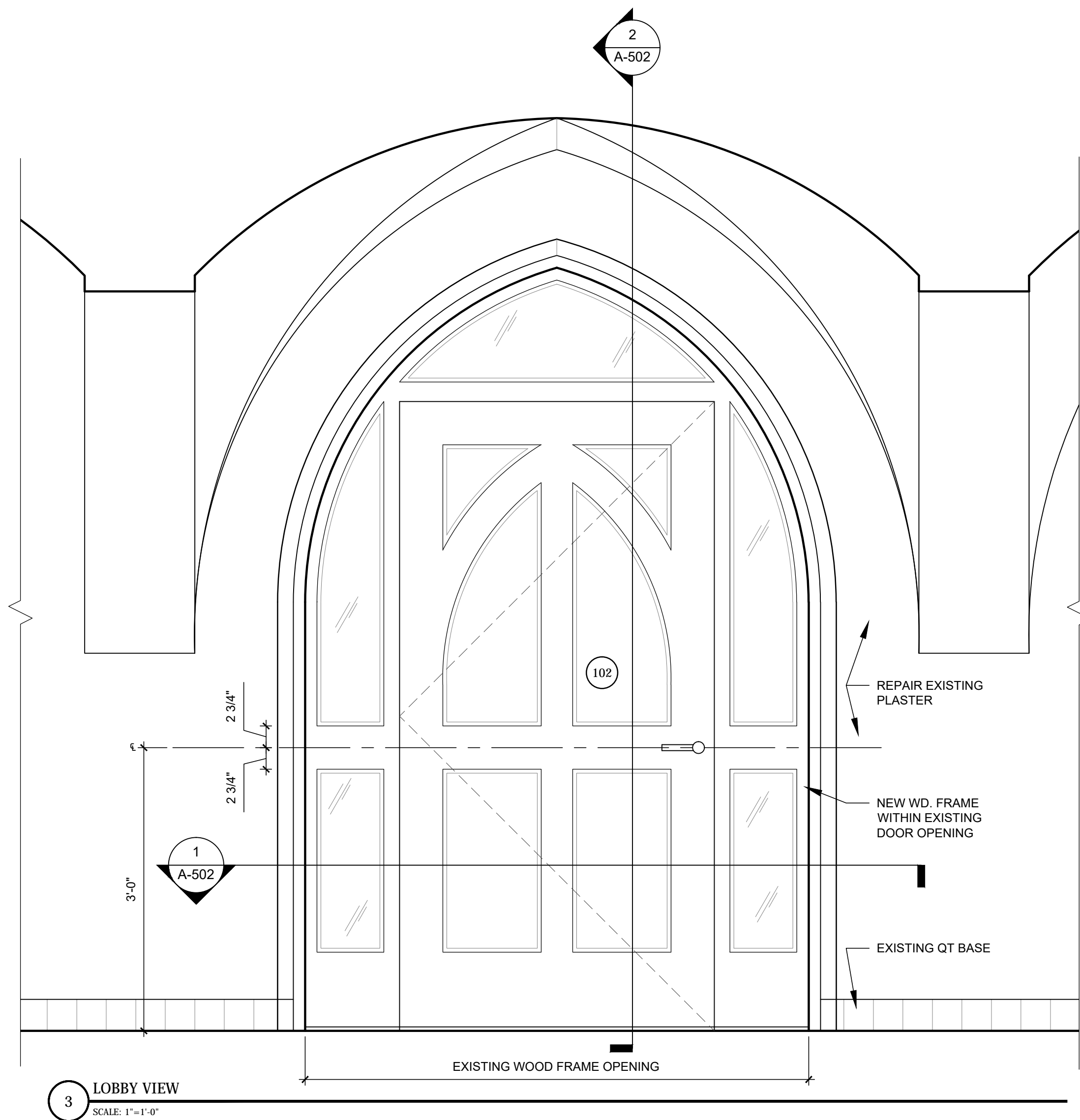
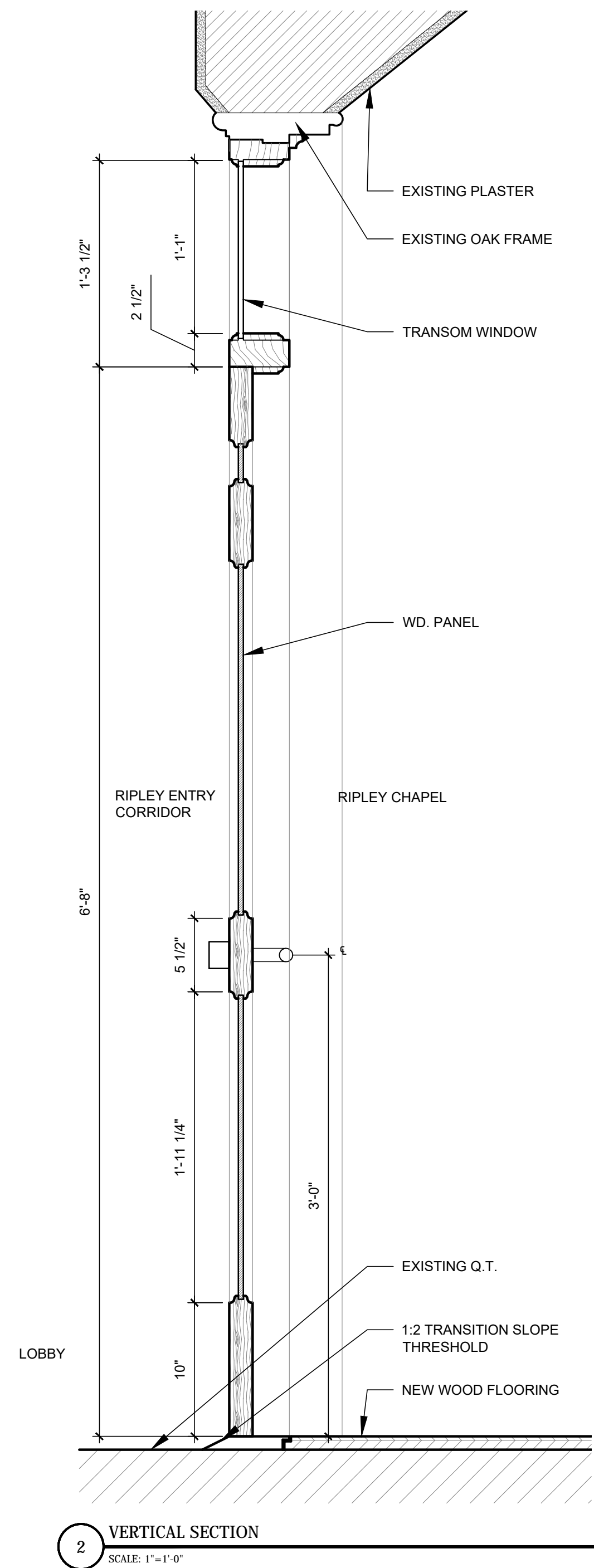
**STRUCTURAL ENGINEER**  
Boston Building Consultants  
241 A Street Suite 220  
Boston, MA 02210  
617-542-3933

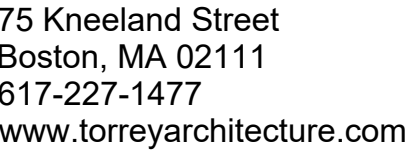
[illegible]

## DOOR 102 DETAILS

Project number	1608
Date	10-05-2018
Drawn by	DM
Checked by	DT

Scale AS NOTED (FOR 22"X34" SHEET)





**STRUCTURAL ENGINEER**  
Boston Building Consultants  
241 A Street Suite 220  
Boston, MA 02210  
617-542-3933

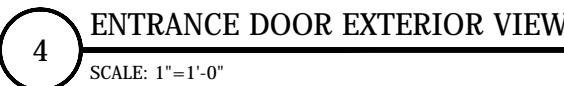
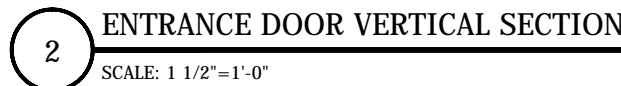
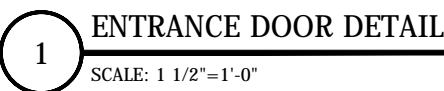
[illegible]

# DOOR 100 DETAILS

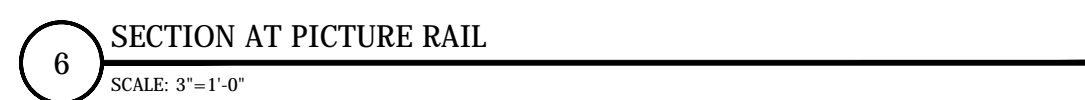
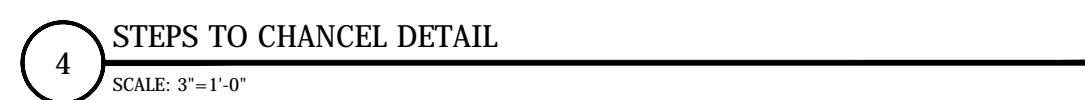
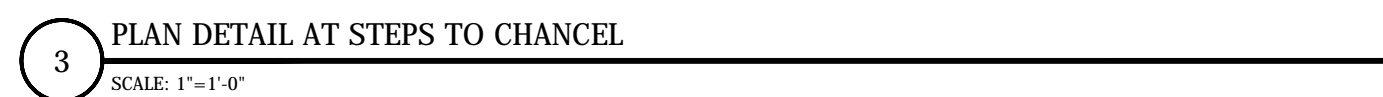
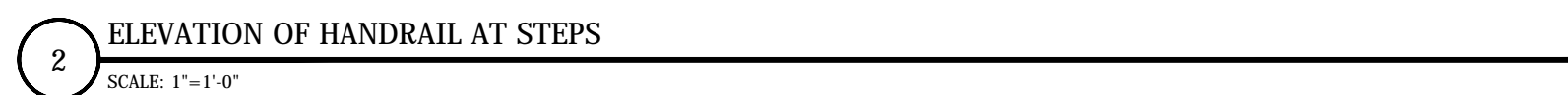
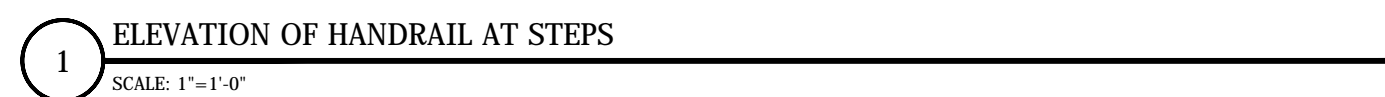
Project number	1608
Date	10-05-2018
Drawn by	DM
Checked by	DT

# A-503

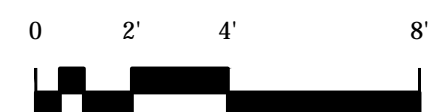
Scale AS NOTED (FOR 22"X34" SHEET)



ENTRANCE DOOR EXTERIOR VIEW



Scale	AS NOTED (FOR 22"X34" SHEET)
-------	------------------------------



DOOR SCHEDULE																							
DOOR											FRAME		CASING		FIRE RATING	HARD WARE							NOTES
MARK	TO	FROM	MANUFACTURER	PART NUMBER	SIZE (ROUGH OPENING)			MATL	FIN	GLZ	MATL	FIN	MATL	FIN		HINGE	LOCK	CLOSER	THRESHOLD	STOP	PLATES	MISC	
					W	HT	THK																
100	EXTERIOR	VESTIBULE 100	KAWNEER	451T	EX	EX	1 3⁄4"	ALUM	KYNAR PTD	Y	ALUM	PTD	WD	PTD	0	H	X	A.O.	9" ALUM	-	-	WSP	SEE A-503, COORDINATE WITH SECURITY SYSTEM
102	LOBBY 101	CHAPEL 102	CUSTOM	AWI PREMIUM	EX	EX	1 3⁄4"	WD	-	Y	OAK	S & V	OAK	S & V	0	H	X	CL	BRONZE	WS	-	K	SEE A-502
104	CHANCELL 103	STORAGE 104	TBD	TBD	(2) 2'-6"	± 7"-0"	1 3⁄4"	OAK	S & V	N	OAK	S & V	OAK	S & V	0	H	C/DL	-	-	WS	-	FB	ACTIVE/INACTIVE PAIR
105	RIPLEY CHAPEL 102	STAIR 105	EX	EX	EX	EX	EX	OAK	S & V	N	OAK	S & V	OAK	S & V	EX	EX	X	CL	BRONZE	WS	-	-	UNDERCUT DOOR
005	EXTERIOR	LOWER STAIR	EX	EX	EX	EX	EX	STL	PTD	EX	STL	PTD	EX	PTD	EX	EX	X	CL	ALUM	-	-	WSP	-

WINDOW SCHEDULE						
MARK	UNITS	R.O. SEE ELEVS		TYPE	MANUFACTURERS NUMBER	NOTES
		WIDTH	HEIGHT			
A	3	2'-1 3/4"	1'-9"	FIXED	CUSTOM SIZE	CUSTOM SEE A-500/A-501
B	3	2'-1 3/4"	4'-11 1/2"	AWNING	CUSTOM SIZE	CUSTOM SEE A-500/A-501

\* ALL WINDOWS SHALL BE PELLA ARCHITECT SERIES WOOD ALUM. CLAD, WITH OAK INTERIOR TRANSPARENT FINISH

HARDWARE KEY				
CODE	DESCRIPTION	MANUFACTURER	PART NUMBER	FINISH
AO	AUTO OPERATOR	DORMA	ED100	BRUSHED ALUM
C	CLASSROOM FUNCTION LEVER LATCH	SCHLAGE	ND70PD - ATH	SATIN BRONZE (612)
CL	CLOSER	LCN	4033	SATIN BRONZE (612)
DL	DUMMY LEVER	SCHLAGE	ND170 - ATH	SATIN BRONZE (612)
FB	FLUSH BOLT	HAGER	282D	SATIN BRONZE (612)
H	HINGE	HAGER	BB1279	US10B (613) AT EXTERIOR SATIN BRONZE US10 (612) AT INTERIOR
K	KICK PLATE	HAGER	193S	SATIN BRONZE (612)
WS	WALL STOP	HAGER	230W	SATIN BRONZE (612)
X	EXIT DEVICE	VON DUPRIN	88L-373 L-07	US10B (613) AT EXTERIOR SATIN BRONZE US10 (612) AT INTERIOR

FINISH SCHEDULE												
ROOM #	NAME	FLOOR		BASE		TRIM		WALL		CEILING		REMARKS
		MAT.	FIN.	MAT.	FIN.	MAT.	FIN.	MAT.	FIN.	MAT.	FIN.	
005	LOWER STAIR	EXISTING	-	EX	PTD	EX	PTD	EX PL	PTD	EX PL	PTD	CLEAN AND RESEAL FLOOR
100	VESTIBULE	EX QT	-	EX QT	-	WD	PTD	EX PL	PTD	EX PL	PTD	CLEAN AND RESEAL QT
101	LOBBY	EX QT	-	EX QT	-	OAK	S & V	EX PL	PTD	EX PL	PTD	CLEAN AND RESEAL QT
102	RIPLEY CHAPEL	EW/CT	MANUFACTURE'S	OAK	S & V	OAK	S & V	EX PL	PTD	EX OAK/EX PL	CLEAN, PTD	C.T. MEDALLION
103	EXISTING CHANCEL	EW	-	OAK	S & V	OAK	S & V	EX PL	PTD	EX OAK/EX PL	CLEAN, PTD	-
104	STORAGE	EW	MANUFACTURE'S	OAK	S & V	OAK	S & V	EX PL	PTD	EX PL	PTD	-
105	STAIR	EX QT	MANUFACTURE'S	EX WD	S & V	WD	PTD	EX PL	PTD	EX PL	PTD	-

FINISHES KEY		
CODE	DESCRIPTION	MATERIAL
AP	ACOUSTIC PANELS	TBD - SEE ALLOWANCES
EW	ENGINEERED WOOD	NYDREE RIFT AND QUARTER SAWN OAK NATURAL, COLOR TBD
OAK	OAK BASEBOARD AND TRIM	NEW TO MATCH EXISTING, QUARTER SAWN
PL	PLASTER	EXISTING TEXTURED PLASTER; MATCH EXISTING
QT	QUARRY TILE	EXISTING QUARRY TILE; MATCH EXISTING
S & V	STAIN AND VARNISH	STAIN TO MATCH EXISTING, 2 COATS VARNISH SATIN SHEEN; SEE SPEC
PTD	PAINTED	PAINT - SEE SPEC
CT	CERAMIC TILE	INSTALL MOSAIC TILE MEDALLION PROVIDED BY OWNER



**Boston Building Consultants**  
241 A Street Suite 220  
Boston, MA 02210  
617-542-3933

[illegible]

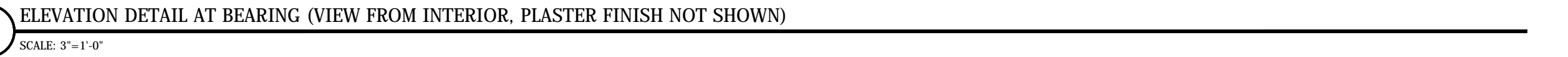
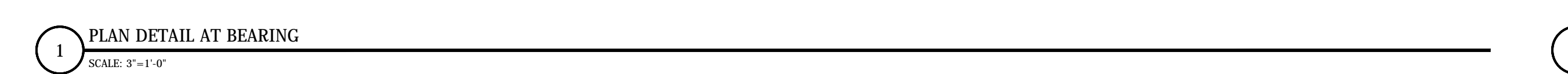
## RIPLEY CHAPEL

## SCHEDULES

Project number	1608
Date	10-05-2018
Drawn by	DM
Checked by	DT

<h1>A-700</h1>
<div style="display: flex; justify-content: space-between;"> <span>Scale</span> <span>AS NOTED (FOR 22"X34" SHEET)</span> </div>

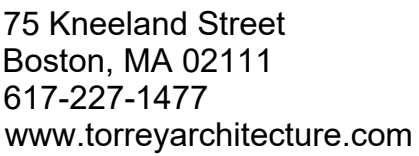
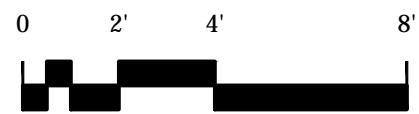
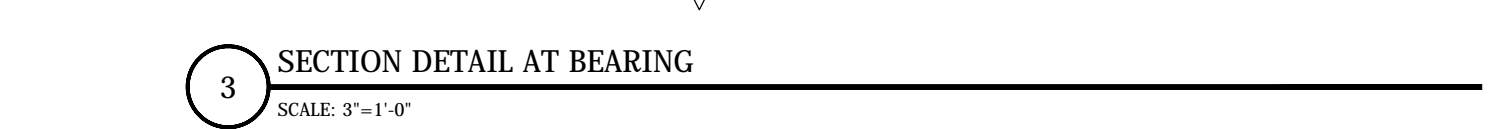
Scale AS NOTED (FOR 22"X34" SHEET)



**CONSTRUCTION SEQUENCE:**

\*VERIFY ALL FIELD CONDITIONS AND DIMENSIONS PRIOR TO FABRICATION OF STEEL

- [1] CUT POCKETS AND INSTALL CONCRETE BEARING BLOCKS, FULL THICKNESS OF WALL, AT EACH END. MINIMUM 12" LONG, 8" HIGH (1" +/- BELOW STEEL BEARING ELEVATION).
- [2] CAREFULLY NOTCH INSIDE FACE OF WALL AS REQUIRED UNDER EXISTING STONE SILL (DO NOT OVERCUT).  
INSTALL STEEL CHANNEL.
- [3] ATTACH CHANNEL TO INSIDE FACE OF EXISTING STONE SILL WITH SIX 5/8" DIAMETER HILTI HY-70 ADHESIVE ANCHORS.
- [4] GROUT SOLID UNDER CHANNEL BEARINGS, TAKING CARE NOT TO OBSTRUCT ACCESS FOR INSTALLATION OF HSS.
- [5] REMOVE SECTION OF WALL AS REQUIRED FOR LOWER WINDOW. GROUT JAMBS SOLID (UNDER BEARING BLOCK) FULL HEIGHT, AT CUT EDGES OF OPENING.
- [6] INSTALL HSS TIGHT TO UNDERSIDE OF EXISTING STONE SILL.  
TEMPORARILY SUPPORT IN PLACE.
- [7] GROUT SOLID UNDER HSS BEARINGS.
- [8] GROUT SOLID ALL AROUND ENDS OF HSS AND CHANNEL.
- [9] WELD CHANNEL TO HSS, USING 3/16" FILLET WELDS AROUND 1" DIAMETER HOLES.  
REMOVE TEMPORARY SUPPORT FROM HSS.



**STRUCTURAL ENGINEER**  
Boston Building Consultants  
241 A Street Suite 220  
Boston, MA 02210  
617-542-3933

# RIPLEY CHAPEL

# STRUCTURAL DETAILS

# S-100

Scale AS NOTED (FOR 22"X34" SHEET)